

# SNOW DEFENDER®

# 4500

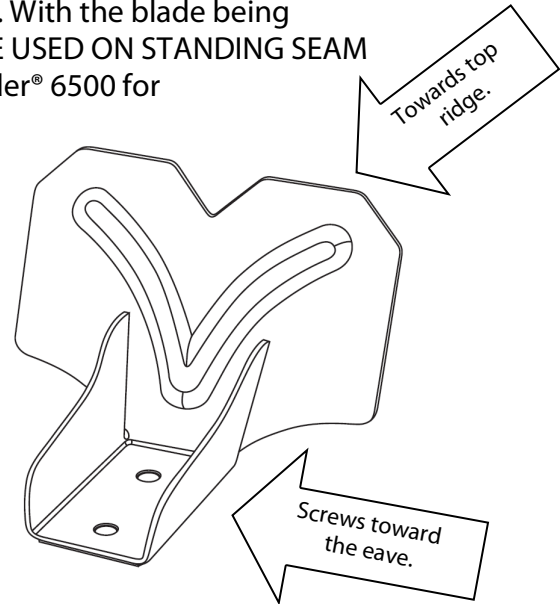
## Installation Instructions

Fasten to roof using Levi's (or comparable quality) 2 inch or longer #12 screws with washers. After fastening the guard be sure that it is tightened properly, also check to make sure it is properly sealed. Screws are to be facing towards the eave of the roof. With the blade being toward the ridge. Snow Defender® 4500 snow guards ARE NOT TO BE USED ON STANDING SEAM ROOFS OR ON ROOFS WITH PURLINS UPRIGHT. Use the Snow Defender® 6500 for standing seam and Snow Defender® 1500 for applications with purlins in the upright position. Please call your distributor to order.

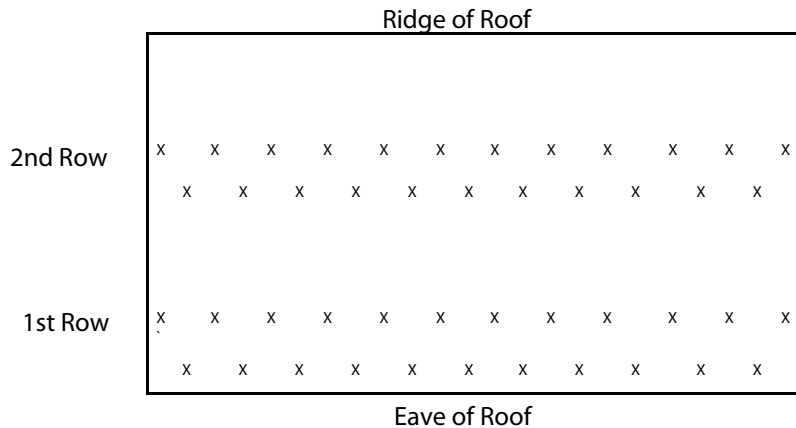
If OSB or plywood is used with no purlins beneath the metal install a 2x4 spacer between the rafters/trusses on the underside of the sheeting & use 2-1/2 inch or longer screws to fasten the guards. If your building has insulation between the roof and the purlin do not use the calculator. Consult with your engineer or architect.

It is recommended to install the guards in a staggered pattern. Installing 1 every 18 inches on the first purlin and going up to the next purlin installing the next row every 18" between the first row. This means putting 1 guard every 9" in a staggered row.

Failure to install an adequate amount of snow guards and in the proper pattern will void the warranty. Visit [www.snowdefendercalculator.com](http://www.snowdefendercalculator.com) to use our snow guard calculator to determine the amount needed.



For warranty details visit [www.snow-defender.com](http://www.snow-defender.com)



Above example is based on Metal Roof Panels being 36" Panels with 9" rib spacing.

Remember it is very important to install the guards properly with the correct quantities. Do not only put snow guards over doorways, walkways, etc.



137 Newport Rd  
Leola PA 17540  
877-897-7020

[www.levisbuildingcomponents.com](http://www.levisbuildingcomponents.com)